



## CAPACities project

Plan for cultural, leisure and sport facilities in  
Pays "Une Autre Provence"

René GUERIN, Project Manager  
CAUE de Vaucluse  
Besançon, June 18th, 2010





## The CAPACities project

This project is an “Alpine Space” territorial cooperation project about Competitiveness Actions and Policies for Alpine Cities, leaded by Regione Lombardia (Italy), which groups together 9 partners from Austria, France, Italy, Slovenia and Switzerland.





## The CAPACities project

As other territorial cooperation projects, CAPACities is divided up among different work packages (WP):

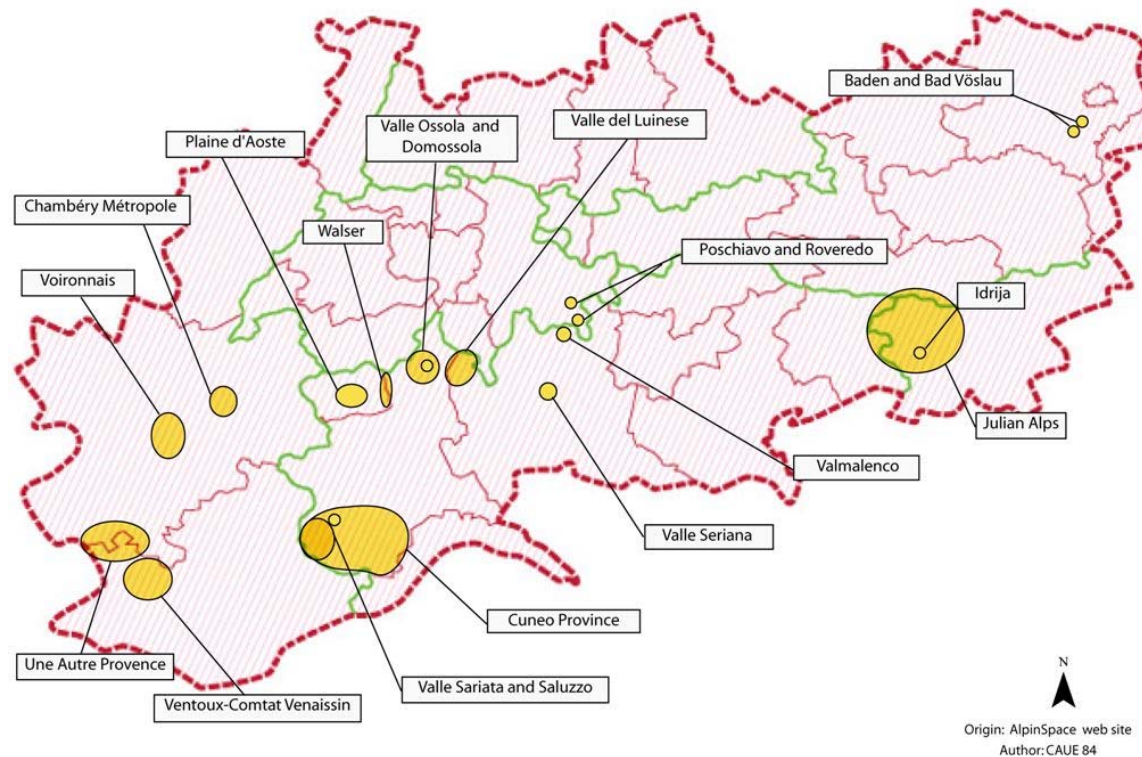
- WP1: Project preparation
- WP2: Project management
- WP3: Information and publicity
- WP4: Alpine towns survey
- WP5: Operational tools
- **WP6: Pilot Actions**
- WP7: Innovative pack for little urban centres.

[www.capacities-alpinespace.eu](http://www.capacities-alpinespace.eu)

The CAUE de Vaucluse (France) is responsible of WP6 coordination.

## The CAPACities project

The project includes **22 Pilot Projects**, set up by each partner and distributed in **5 types of Pilot Actions** (territorial, social, economic, cultural and environmental actions).





## The CAUE de Vaucluse

The Conseil d'architecture, d'urbanisme et de l'environnement (CAUE) de Vaucluse is a **public organization in charge of advice** in the fields of architecture, territorial and urban planning and environment, in Vaucluse Department (NUTS 3).

The advices of CAUE are mainly intended to local authorities, administrations, professionals and builders. Territory planning and international cooperation (Culture 2007-2013...) are among the activities of CAUE de Vaucluse.

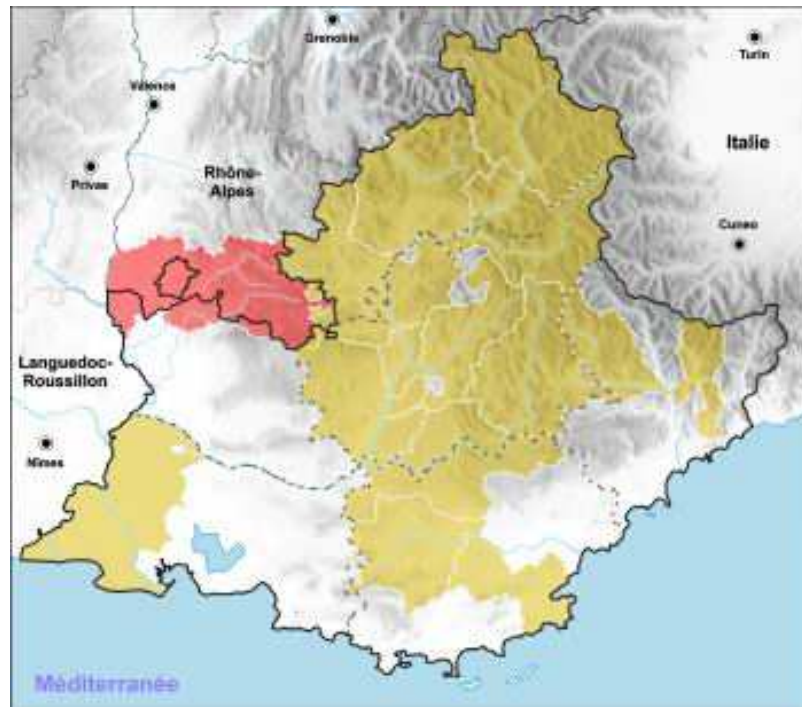
Among the local organizations, the Pays "Une Autre Provence" solicited CAUE de Vaucluse and CAUE de la Drôme for a medium-term Plan for cultural, leisure and sports facilities.

[www.archi.fr/caue84/](http://www.archi.fr/caue84/)



## The Pays “Une Autre Provence”

It's a “**project territory**”, a territorial entity established within the framework of French Laws on Territory Planning and Sustainable Development (Law “Pasqua” of February 4th, 1995 and “Voynet” of June 25th, 1999).

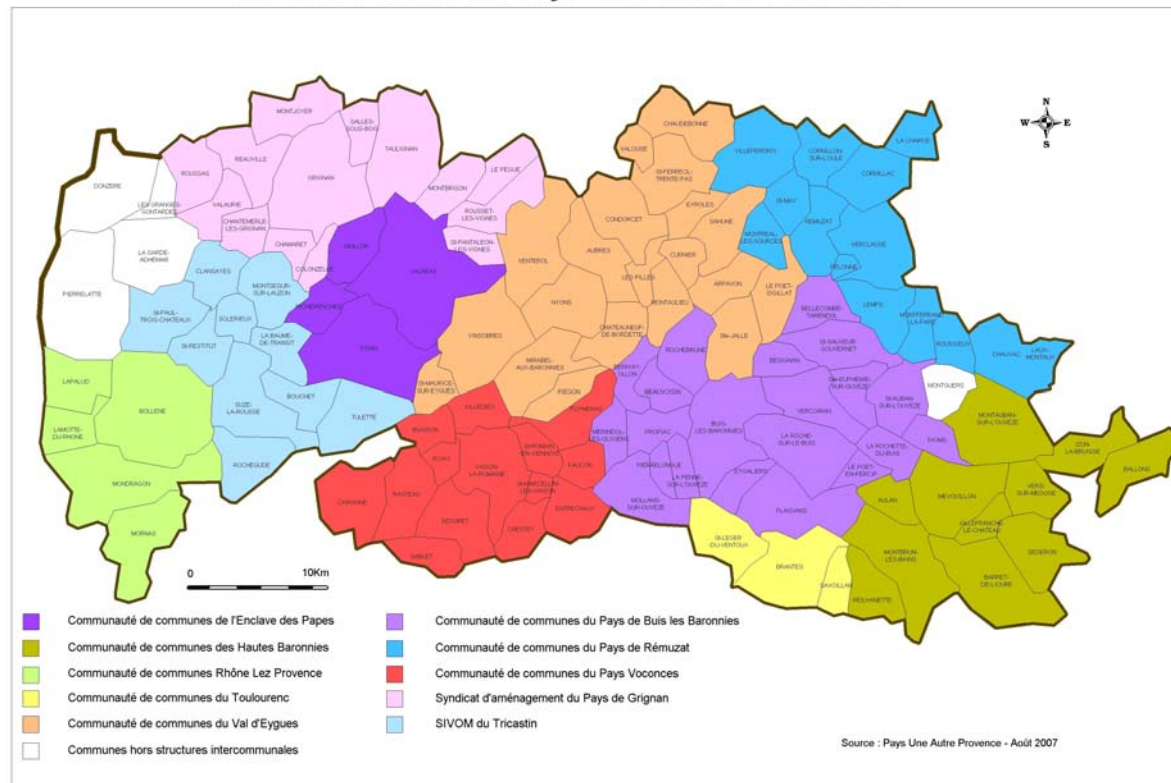


The Pays “Une Autre Provence”, shared between Provence – Alpes – Côte d’Azur (Vaucluse Department) and Rhône – Alpes (Drôme Department) Regions corresponds to an **alternative territory approach** (life basin) in comparison to the traditional approach (administrative borders).

## The Pays “Une Autre Provence”

The territory includes 120 municipalities distributed in 10 intercommunal entities and Communes Communities (NUTS 4 or LAU 1).

*Le territoire du Pays Une Autre Provence*





## The Pays “Une Autre Provence”

“Une Autre Provence” is a wide territory (2110 km<sup>2</sup>) where live 119,000 inhabitants (2006), with a low density of population (56,4 inh/km<sup>2</sup>). The territory is shared in two different entities:

- on the Western part, the **Rhône Valley**, developed and industrialized (nuclear cluster of Tricastin), which forms an important way between Northern and Southern Europe (motorway E 15, high-speed railway);
- on the Eastern part, the **Baronnies and Ventoux mountains**, have lost a large part of their population since the 19th century, due to rural exodus.



## The Pays “Une Autre Provence”

In spite of the difficulties of the mountain area, this territory enjoys a **high level of competitiveness**.

This territory is concerned by **3 competitiveness clusters** distinguished by DATAR (Trimatec: nuclear technologies; PASS: fragrances and flavours; PEIFL: European innovation on fruits and vegetables).

Moreover, the Pays “Une Autre Provence” runs a “**Leader**” **European programme “Soil and Taste”**, and is candidate for the label “**Rural Excellence Cluster**” awarded by DATAR.

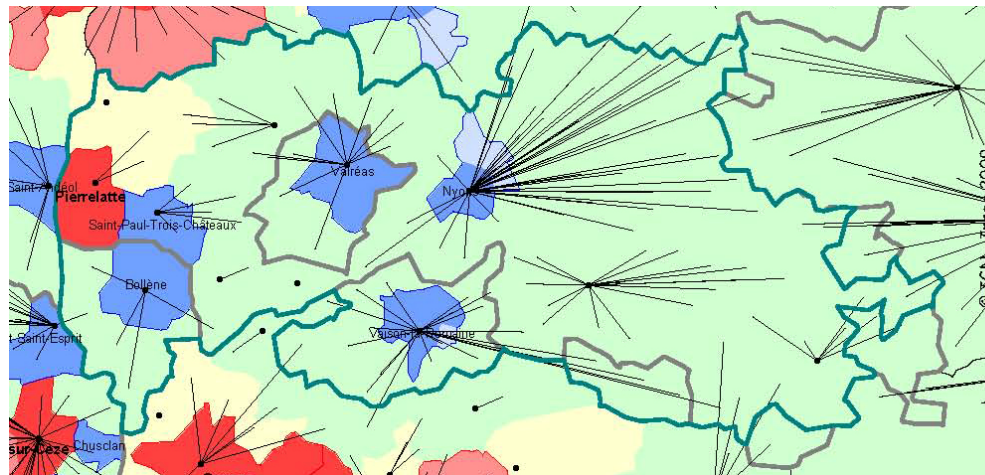




## The Pays “Une Autre Provence”

With the aim to improve **quality of life and employment of the population**, the other challenges of the Pays “Une Autre Provence” are to increase **cohesion between Western and Eastern parts**, on one hand, and to strengthen the **attractiveness of the little towns** (Bollène, Buis-les-Baronnies, Grignan, Nyons, Pierrelatte, Saint-Paul-Trois-Châteaux, Vaison-la-Romaine, Valréas) faced with the middle-size nearest cities (Montélimar, Orange), on the other hand.

[www.paysuneautreprovence.com](http://www.paysuneautreprovence.com)





## Plan for facilities: an innovative approach

New cultural, leisure and sports **facilities contribute to improve quality of life and attractiveness** of the territory.

In France, in rural areas, the building and the management of cultural, leisure and sports facilities are under responsibility of the municipalities, excepted when these actions are chosen as optional or facultative responsibilities of the Communes Communities. In "Une Autre Provence", these facilities being under responsibility of the municipalities, until now, they were planned at municipal level, without coherence worry. The planning coordination, initiated by the Pays, was possible thanks to the **will of the different municipalities to share their strategy** and to save financial resources by sharing of certain facilities.



## Plan for facilities: an innovative approach

The Pays “Une Autre Provence” offers a **relevant territorial scale** for some major facilities, the size of the Communes Communities being insufficient.

Otherwise, the mission of the Pays is to set up the **territorial strategy defined by a Charter** worked out by elected and civil society representatives (Steering Committee), and to assist and support public and private project initiatives. With this aim, the Pays manages funds within the framework of **territorial development contracts** with Provence – Alpes – Côte d’Azur and Rhône – Alpes Regions, and with Vaucluse Department.



## Plan for facilities: an innovative approach

The **planning method** adopted by the Pays, the CAUE de la Drôme and the CAUE de Vaucluse is based on:

- **survey by consultation** of the Communes Communities and the municipalities (questionnaires): existing facilities inventory, planned or started projects, inventory of needs and lacks;
- **interviews** with elected representatives or territorial staff;
- **analysis** to confirm or invalidate the needs and lacks expressed by local authorities ;
- **classification** of the existing and future structuring projects in accordance with two levels: main facilities spreading on the whole "Une Autre Provence" territory and secondary facilities spreading on the Communes Communities areas;
- **working out of the Plan** for the different types and categories of facilities: location, short, medium or long-term maturity;
- **validation** of the Plan by the Steering Committee of the Pays.



## Plan for facilities: an innovative approach

Nom de la commune ou de la communauté de communes :  
Nom et fonction de la (des) personne(s) remplissant le questionnaire :



### **Pays « Une autre Provence »** **Recensement des équipements sportifs,** **culturels et de loisirs**

#### **FICHE EQUIPEMENT EXISTANT** *(remplir une fiche par équipement)*

**Important :** Sur les types d'équipements entrant dans ces catégories, se rapporter à la liste jointe à ce questionnaire. Il peut s'agir d'équipements publics comme d'équipements privés (ex : centre équestre).

#### **1 - Nature (type) de l'équipement**

Adresse :

#### **2 - Maîtrise d'ouvrage et gestionnaire**

S'agit-il d'un équipement public ? OUI NON

Communal ? OUI NON

La commune a-t-elle confié sa gestion à un partenaire ?

Qui ?

Intercommunal ? OUI NON

S'il s'agit d'une maîtrise d'ouvrage intercommunale, préciser quelle structure intercommunale :

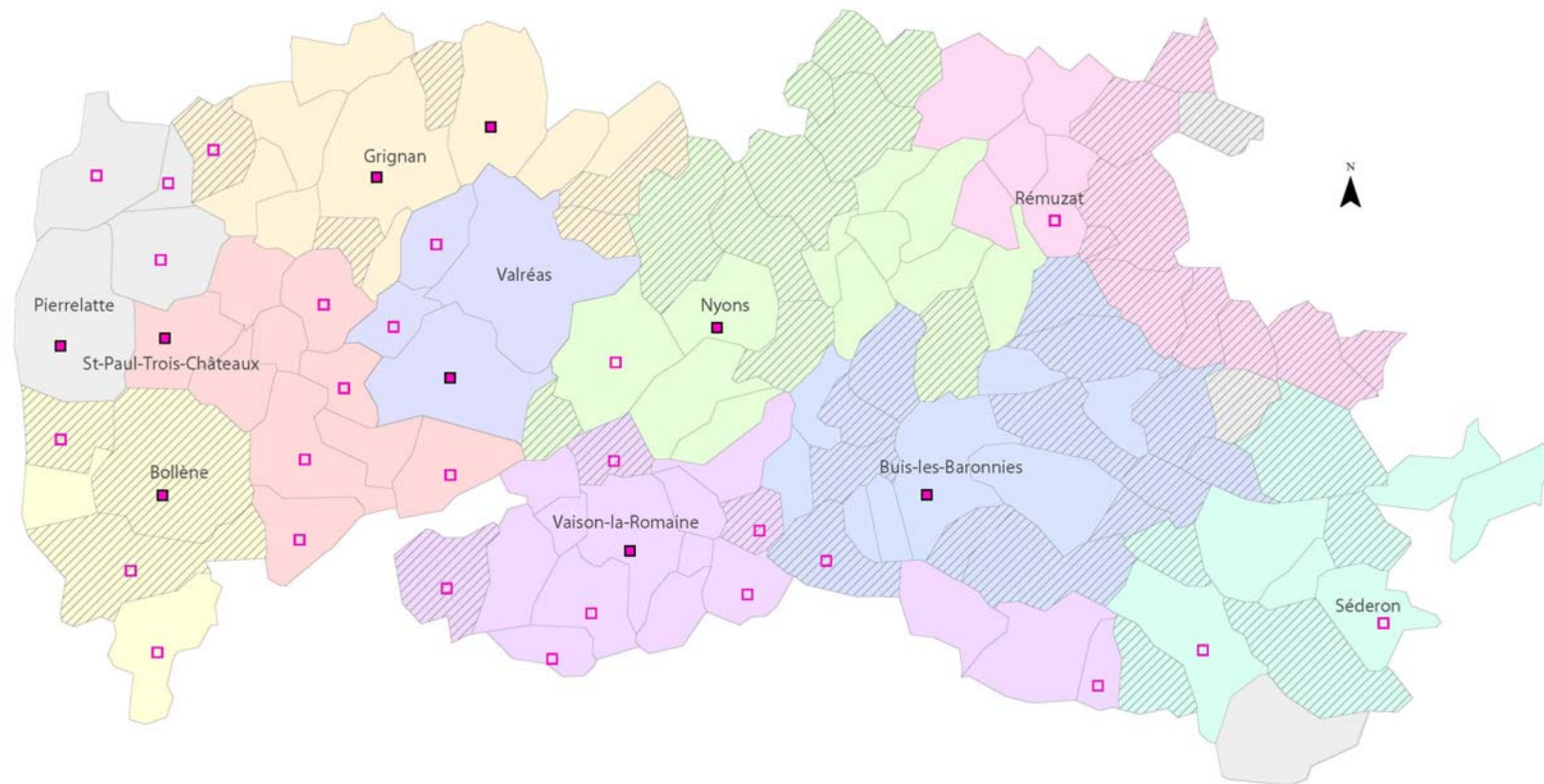
S'agit-il d'un équipement privé ? OUI NON

Si OUI, coordonnées du propriétaire et/ou gestionnaire à contacter pour obtenir des informations :

Questionnaire Form

# Plan for facilities: an innovative approach

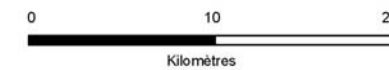
## Médiathèques, bibliothèques



Communes non renseignées

Médiathèques, bibliothèques structurantes

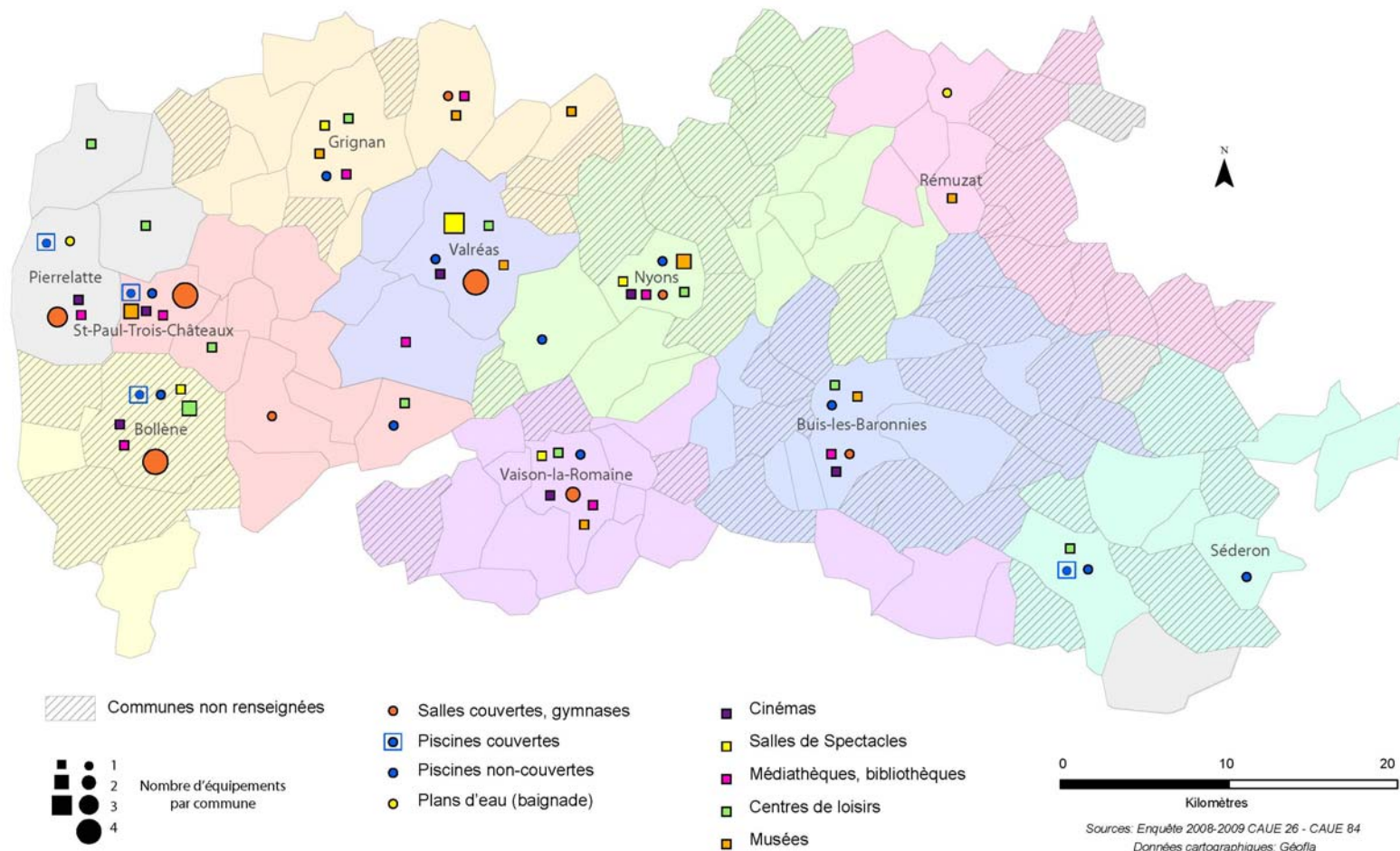
Autres médiathèques, bibliothèques existantes



Sources: Enquête 2008-2009 CAUE 26 - CAUE 84  
Données cartographiques: Géofila

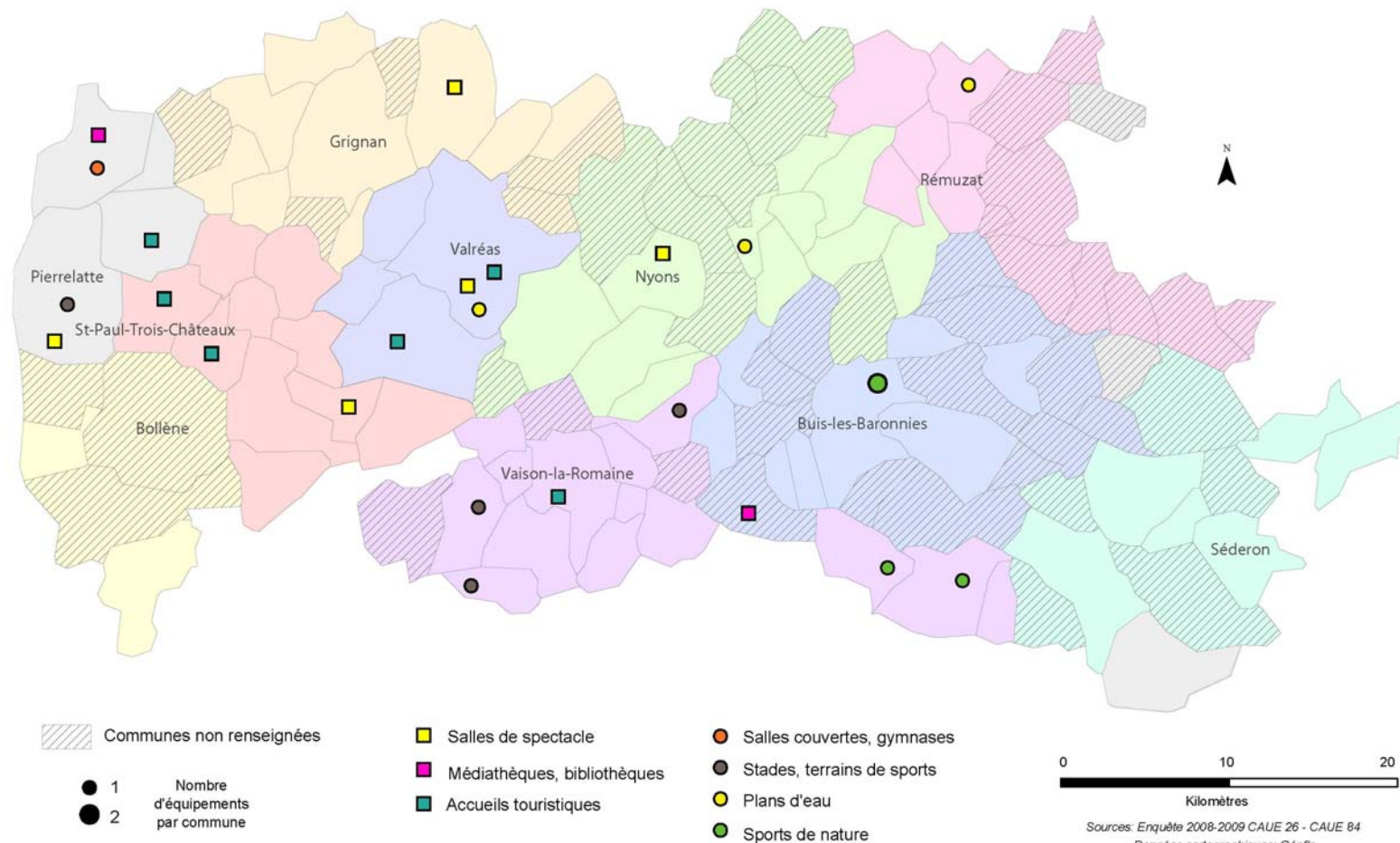
# Plan for facilities: an innovative approach

## Equipements structurants existants



# Plan for facilities: an innovative approach

## Projets d'équipements structurants par sous-catégories





**Thank you for your attention!**

***Merci pour votre attention !***